



# Foxfire



FREE PATTERN



# Foxfire

Maureen  
Cracknell

QUILT DESIGNED BY MAUREEN CRACKNELL



# Nightfall

FABRICS DESIGNED BY MAUREEN CRACKNELL

MOONSET



NTF-67900  
LUNATION DARK



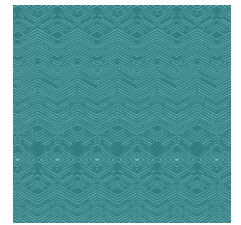
NTF-67901  
MOTHLIKE SHADOWS PURE



NTF-67902  
MYSTICAL WOODS LUNAR



NTF-67903  
MOON STORIES ASH



NTF-67904  
LABYRINTHINE DUSK



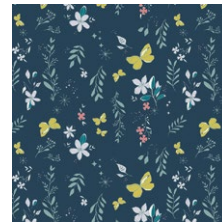
NTF-67905  
NOX IRIDESCENCE DIM



NTF-67906  
AURA FLETCINGS ROSE



NTF-67907  
LUMINARIES SILVER



NTF-67908  
MAGICAL GUST CRIP



NTF-67909  
BIRD OF NIGHT MIST

MOONRISE



NTF-77900  
LUNATION BRIGHT



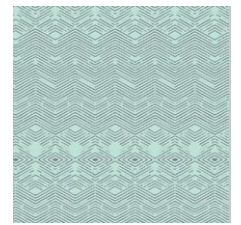
NTF-77901  
MOTHLIKE SHADOWS DEP



NTF-77902  
MYSTICAL WOODS SOLAR



NTF-77903  
MOON STORIES SPARK



NTF-77904  
LABYRINTHINE DAWN



NTF-77905  
NOX IRIDESCENCE AGLOW



NTF-77906  
AURA FLETCINGS BLUE



NTF-77907  
LUMINARIES GOLD



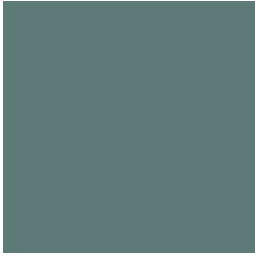
NTF-77908  
MAGICAL GUST FOG



NTF-77909  
BIRD OF NIGHT SLATE



ADDITIONAL BLENDERS FOR THIS PROJECT



PE-452  
SPRUCE



FINISHED SIZE | 70" x 70"

## FABRIC REQUIREMENTS

Fabric A	NTF-67900	¼ Yd.
Fabric B	NTF-67901	½ Yd.
Fabric C	NTF-67902	⅜ Yd.
Fabric D	NTF-67903	¾ Yd.
Fabric E	NTF-67904	⅞ Yd.
Fabric F	NTF-67905	½ Yd.
Fabric G	NTF-67906	¼ Yd.
Fabric H	NTF-67907	¼ Yd.
Fabric I	NTF-67908	⅜ Yd.
Fabric J	NTF-67909	⅜ Yd.
Fabric K	NTF-77900	¼ Yd.
Fabric L	NTF-77901	¼ Yd.
Fabric M	NTF-77902	⅜ Yd.
Fabric N	NTF-77903	½ Yd.
Fabric O	NTF-77904	¼ Yd.
Fabric P	NTF-77905	⅜ Yd.
Fabric Q	NTF-77906	⅛ Yd.
Fabric R	NTF-77907	½ Yd.
Fabric S	NTF-77908	¼ Yd.
Fabric T	NTF-77909	¾ Yd.
Fabric U	PE-452	1 ¼ Yd.

### BACKING FABRIC

NTF-77909 4½ yds. *(Suggested)*

### BINDING FABRIC

NTF-67904 (Fabric E) *(Included)*

## CUTTING DIRECTIONS

¼" seam allowances are included.  
WOF means width of fabric.

### Fabric A

- Sixteen (16) 2½" squares.

### Fabric B

- Thirty two (32) 6½" x 2½" rectangles.

### Fabric C

- Twelve (12) 5¾" squares.

### Fabric D

- Nine (9) 6½" fussy cut squares.

### Fabric E

- Thirty six (36) 6½" x 2½" rectangles.

### Fabric F

- Thirty two (32) 6½" x 2½" rectangles.

### Fabric G

- Thirty two (32) 2½" squares.

### Fabric H

- Sixteen (16) 6½" x 2½" rectangles.

### Fabric I

- Fourteen (14) 5¾" squares.

### Fabric J

- Four (4) 6½" fussy cut squares.

### Fabric K

- Thirty six (36) 2½" squares.

### Fabric L

- Sixteen (16) 6½" x 2½" rectangles.

### Fabric M

- Six (6) 5¾" squares.

### Fabric N

- Four (4) 6½" fussy cut squares.

### Fabric O

- Sixteen (16) 6½" x 2½" rectangles.

### Fabric P

- Sixteen (16) 6½" x 2½" rectangles.

### Fabric Q

- Sixteen (16) 2½" squares.

### Fabric R

- Thirty six (36) 6½" x 2½" rectangles.

### Fabric S

- Six (6) 5¾" squares

### Fabric T

- Eight (8) 6½" fussy cut squares.

### Fabric U

- Thirty eight (38) 5¾" squares.

## CONSTRUCTION

*Sew all rights sides together with ¼" seam allowance.*

- This project is made out of 4 different blocks which we will call Block 1, 2, 3 and 4.
- We will also be using the Magic 8 method to construct the HST (half square triangles)

## Magic 8 method:

- Start by placing one  $5\frac{3}{4}$ " square from fabric **C** and **U** right sides together.
- Mark a line across both diagonals on the wrong side of the top fabric square.
- Sew a  $\frac{1}{4}$ " seam on both sides of the marked diagonal lines.
- Using your rotary blade or scissors cut a horizontal line, vertical line, and on both drawn diagonal lines.
- Open each HST outward and lightly press.
- Be very careful to only press up and down, NOT back and forth so as not to stretch them.
- Your seam should be pressed (both layers) toward the darker color.
- Trim each HST to a  $2\frac{1}{2}$ " square.

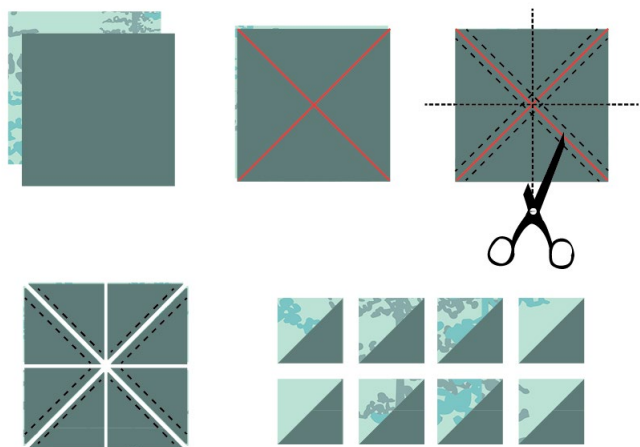


DIAGRAM 1

### Repeat the same step with:

- Eleven (11)  $5\frac{3}{4}$ " square from fabric **C** and **U**, to get a total of eighty eight (88) **C-U** hst combinations.
- Six (6)  $5\frac{3}{4}$ " square from fabric **M** and **U**, to get a total of forty eight (48) **M-U** hst combinations.
- Six (6)  $5\frac{3}{4}$ " square from fabric **S** and **U**, to get a total of forty eight (48) **S-U** hst combinations.
- Fourteen (14)  $5\frac{3}{4}$ " square from fabric **I** and **U**, to get a total of one hundred and eight (108) **I-U** hst combinations.



DIAGRAM 2

## Block 1

For block 1 you will need:

- Twelve (12) **S-U** hst combinations.
- Four (4)  $2\frac{1}{2}$ " squares from fabric **A**.
- Four (4)  $6\frac{1}{2}$ " x  $2\frac{1}{2}$ " rectangles from fabric **O** and **H**.
- One (1)  $6\frac{1}{2}$ " fussy cut square from fabric **N**.
- Arrange the pieces into 5 rows, sew rows together. Follow diagram below for reference.
- You will need a total of four block 1.

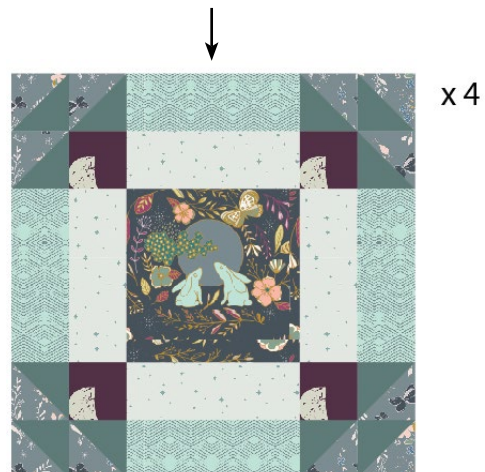
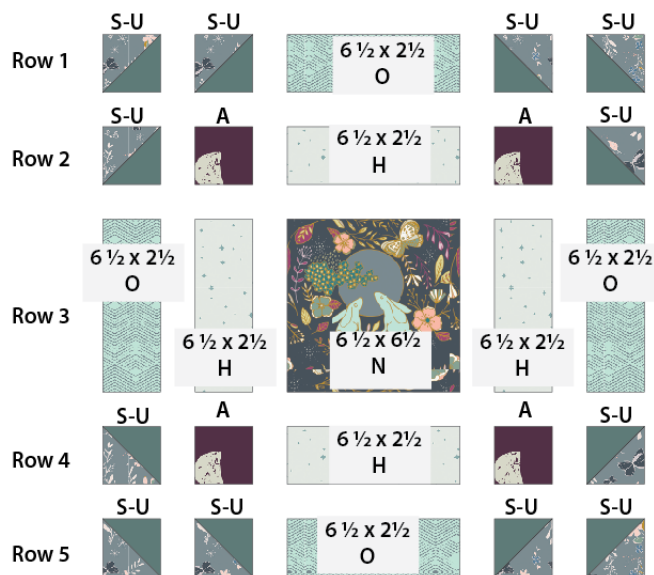
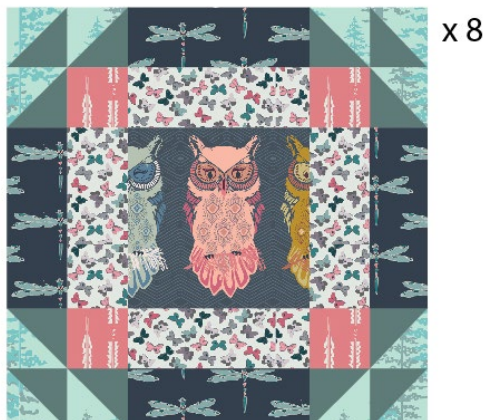
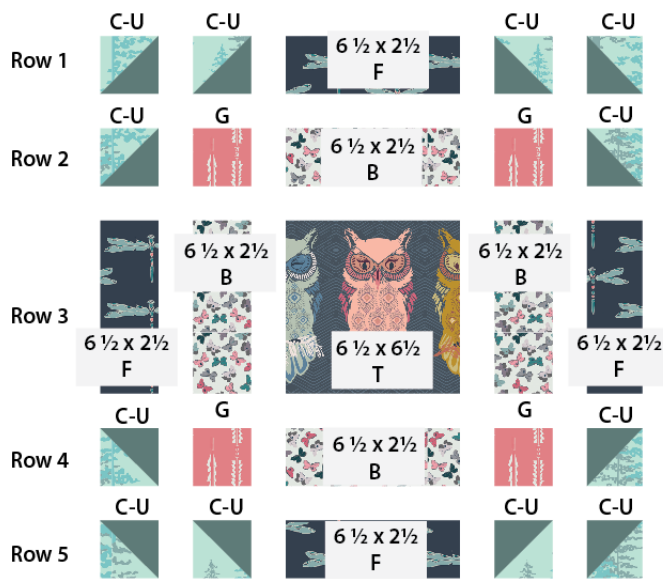


DIAGRAM 3

**Block 2:**

For block 2 you will need:

- Twelve (12) **C-U** hst combinations.
- Four (4)  $2\frac{1}{2}$ " squares from fabric **G**.
- Four (4)  $6\frac{1}{2}$ " x  $2\frac{1}{2}$ " rectangles from fabric **B** and **F**.
- One (1)  $6\frac{1}{2}$ " fussy cut square from fabric **T**.
- Arrange the pieces into 5 rows, sew rows together. Follow diagram below for reference.
- You will need a total of eight block 2.



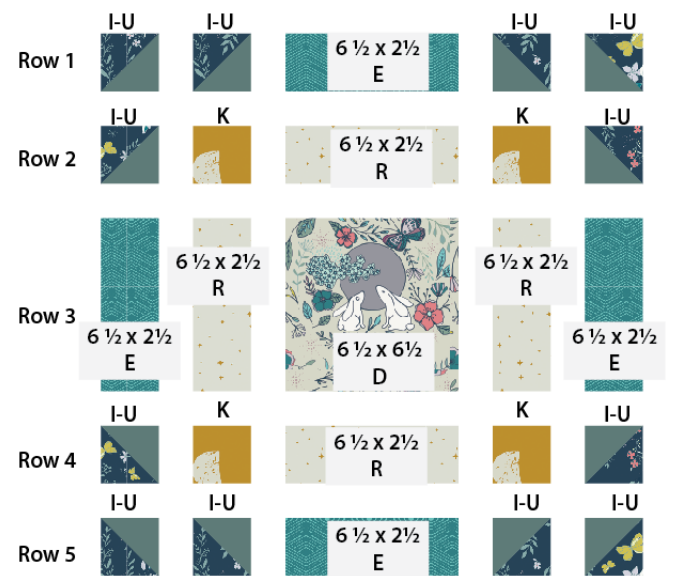
x 8

DIAGRAM 4

**Block 3:**

For block 3 you will need:

- Twelve (12) **I-U** hst combinations.
- Four (4)  $2\frac{1}{2}$ " squares from fabric **K**.
- Four (4)  $6\frac{1}{2}$ " x  $2\frac{1}{2}$ " rectangles from fabric **E** and **R**.
- One (1)  $6\frac{1}{2}$ " fussy cut square from fabric **D**.
- Arrange the pieces into 5 rows, sew rows together. Follow diagram below for reference.
- You will need a total of nine block 3.



x 9

DIAGRAM 5

**Block 4**

For block 4 you will need:

- Twelve (12) **M-U** hst combinations.
- Four (4)  $2\frac{1}{2}$ " squares form fabric **Q**.
- Four (4)  $6\frac{1}{2}$ " x  $2\frac{1}{2}$ " rectangles from fabric **L** and **P**.
- One (1)  $6\frac{1}{2}$ " fussy cut square from fabric **J**.
- Arrange the pieces into 5 rows, sew rows together. Follow diagram below for reference.
- You will need a total of four block 4.

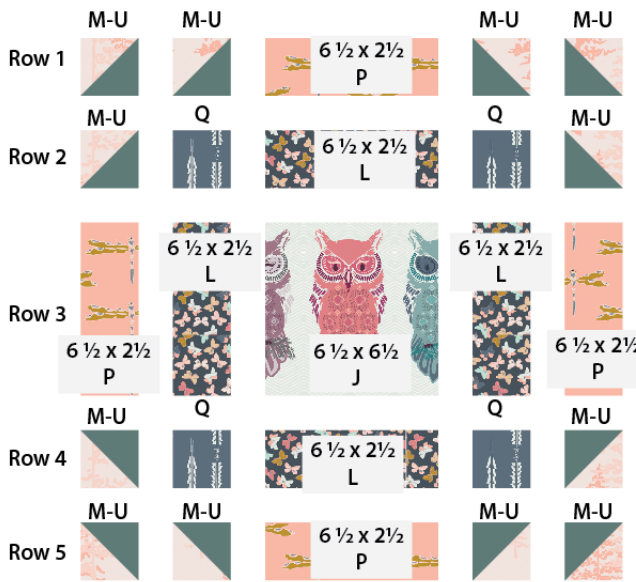


DIAGRAM 6



- Arrange the finish blocks in 5 rows of 5 blocks each.
- For blocks placements and arrangement, follow diagram below.

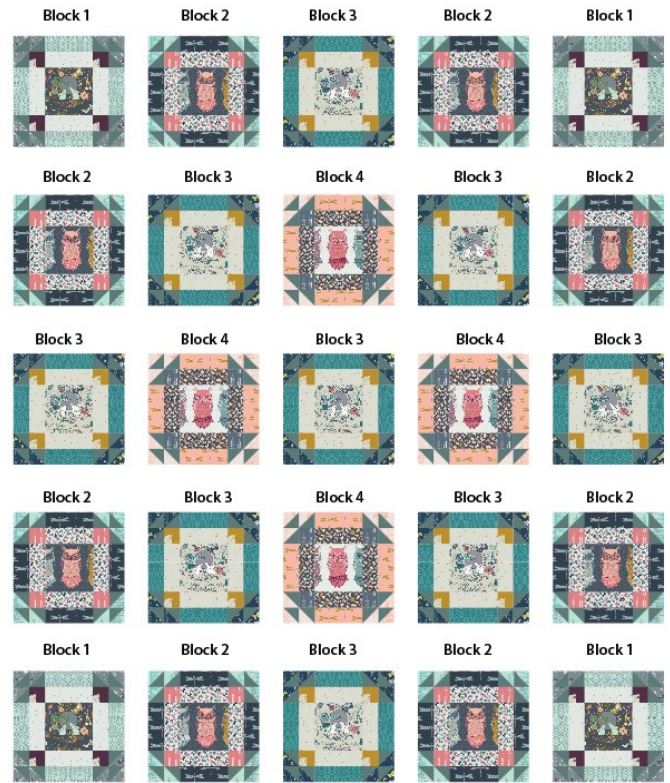


DIAGRAM 7

- Sew rows together.

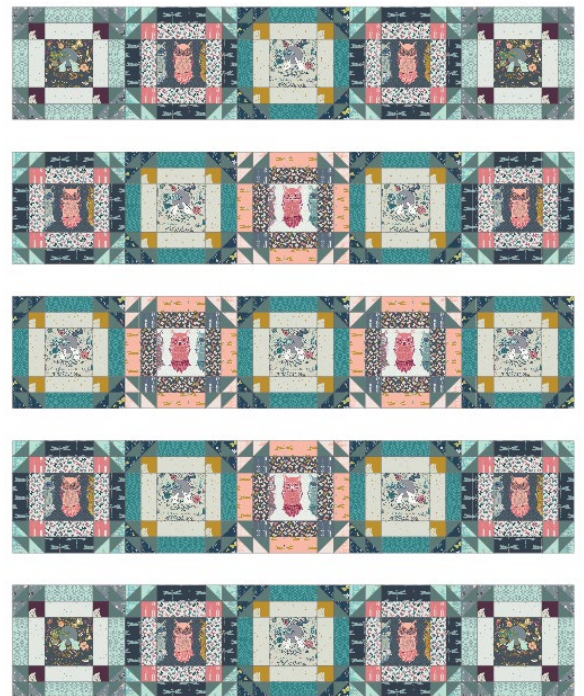


DIAGRAM 8



## QUILT ASSEMBLY

*Sew rights sides together.*

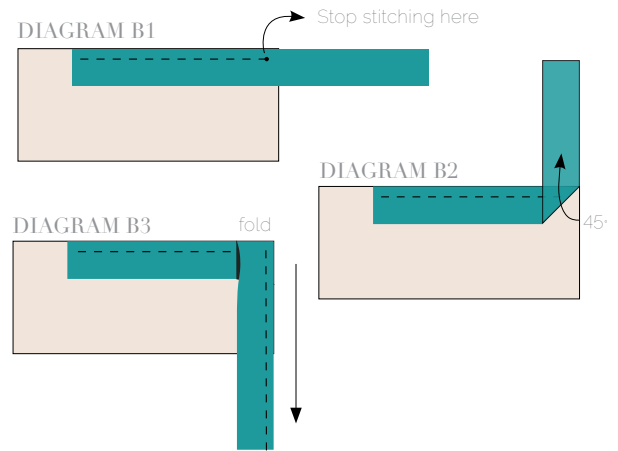
- Place BACKING FABRIC on a large surface wrong side up. Stretch it with masking tape against that surface.
- Place BATTING on top of backing fabric.
- Place TOP on top of the batting with right side facing up. Smooth away wrinkles using your hands.
- Pin all layers together and baste with basting thread, using long stitches. You can also use safety pins to join the layers.
- Machine or hand quilt starting at the center and working towards the corners. Remember that quilting motifs are a matter of personal preference. Have fun choosing yours!
- After you finished, trim excess of any fabric or batting, squaring the quilt to proceed to bind it.

## BINDING

*Sew rights sides together.*

- Cut enough strips 1½" wide by the width of the fabric **E** to make a final strip 290" long. Start sewing the binding strip in the middle of one of the sides of the quilt, placing the strip right side down and leaving an approximated 5" tail. Sew with ¼" seam allowance (using straight stitch), aligning the strip's raw edge with the quilt top's raw edge.
- Stop stitching ¼" before the edge of the quilt (DIAGRAM B 1). Clip the threads. Remove the quilt from under the machine presser foot. Fold the strip in a motion of 45° and upward, pressing with your fingers (DIAGRAM B2). Hold this fold with your finger, bring the strip down in line with the next edge, making a horizontal fold that aligns with the top edge of the quilt (DIAGRAM B3). Start sewing at ¼" of the border, stitching all the layers. Do the same in the four corners of the quilt.

- Stop stitching before you reach the last 5 or 6 inches. Cut the threads and remove the quilt from under the machine presser foot. Lay the loose ends of the binding flat along the quilt edge, folding the ends back on themselves where they meet. Press them together to form a crease. Using this crease as the stitching line, sew the two open ends of the binding with right sides together (you can help yourself marking with a pencil if the crease is difficult to see).
- Trim seam to ¼" and press open. Complete the sewing. Turn binding to back of the quilt, turn raw edge inside and stitch by hand using blind stitch.



[artgalleryfabrics.com](http://artgalleryfabrics.com)

*NOTE: While all possible care has been taken to ensure the accuracy of this pattern, We are not responsible for printing errors or the way in which individual work varies. Please read instructions carefully before starting the construction of this quilt. If desired, wash and iron your fabrics before starting to cut.*

© 2020 Courtesy of Art Gallery Quilts LLC. All Rights Reserved.