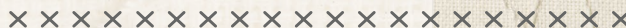
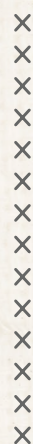


Buenos Aires



Buenos Aires

DESIGNED BY AGF STUDIO

Nuncia

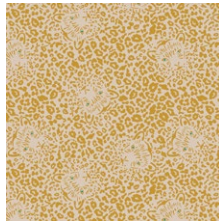
FABRICS DESIGNED BY PAT BRAVO



ALWAYS WITH ME



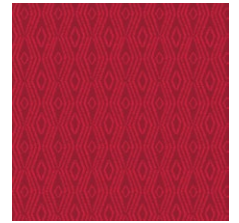
NUC-11980
FLOWERS EVERYWHERE
INTENTION



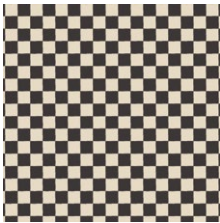
NUC-11981
PRETTY EYES TWINKLY



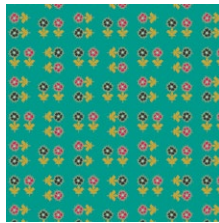
NUC-11982
PAISLEYS FOREVER
BOHEME



NUC-11983
JUST MORE RED



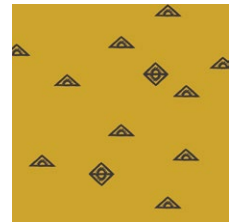
NUC-11985
DANCE THIS TANGO



NUC-11987
ALWAYS DO GOOD CIELO



NUC-11988
BUENOS AIRES SUD

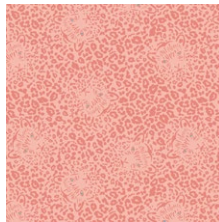


NUC-11989
FAITH

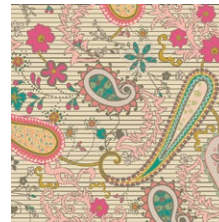
ALWAYS HERE



NUC-21980
FLOWERS EVERYWHERE
CARESS



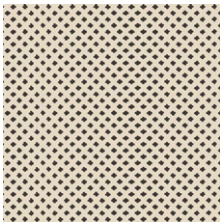
NUC-21981
PRETTY EYES SWEET



NUC-21982
PAISLEYS FOREVER ROSA



NUC-21984
THE RIGHT PATH



NUC-21986
GOODNESS THOUGHTS



NUC-21987
ALWAYS DO GOOD AMOR



NUC-21988
BUENOS AIRES PAMPA



NUC-21990
LET'S SEW SOMETHING





FINISHED SIZE | 10' x 10'

FABRIC REQUIREMENTS

Block 1		
Fabric A	NUC-11987	F8
Fabric B	NUC-11981	F8
Fabric C	NUC-11989	F8
Fabric D	NUC-11985	F8
Fabric E	PE-408	F8
Fabric F	PE-429	F8

Block 2		
Fabric A	NUC-11982	F8
Fabric B	PE-402	F8
Fabric C	NUC-11983	F8
Fabric D	NUC-21986	F8
Fabric E	PE-429	F8
Fabric F	PE-408	F8

Block 3		
Fabric A	NUC-21982	F8
Fabric B	NUC-21981	F8
Fabric C	PE-405	F8
Fabric D	NUC-11985	F8
Fabric E	PE-408	F8
Fabric F	PE-429	F8

Block 4		
Fabric A	NUC-11980	F8
Fabric B	PE-459	F8
Fabric C	NUC-21988	F8
Fabric D	NUC-21986	F8
Fabric E	PE-429	F8
Fabric F	PE-408	F8

CUTTING DIRECTIONS

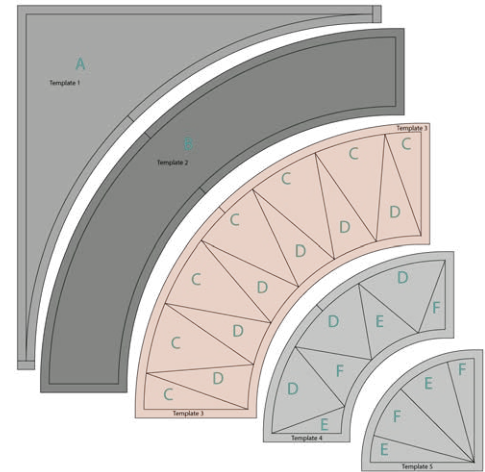
$\frac{1}{4}$ " seam allowances are included.
WOF means width of fabric.

- One (1) Template 1 from fabric **A**.
- One (1) Template 2 from fabric **B**.

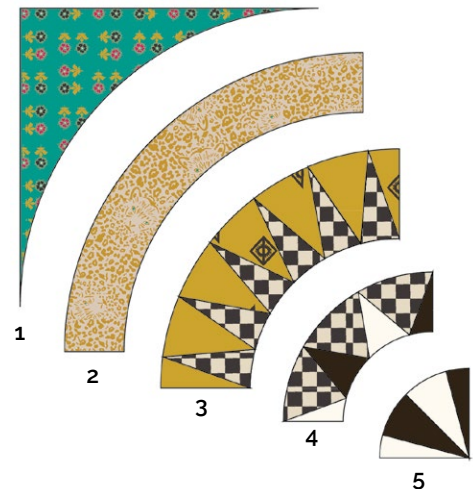
CONSTRUCTION

Sew all right sides together with $\frac{1}{4}$ " seam allowance.

- Follow the fabric letters in templates 3, 4, and 5 to do foundation paper piecing.
- Join the templates as follows: 1 - 2 - 3 - 4 - 5.



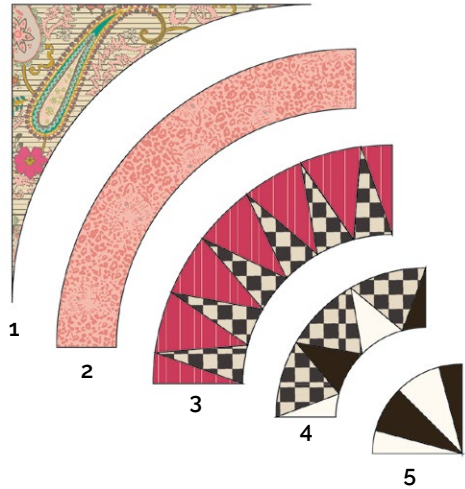
Block 1



Block 2



Block 3



Block 4



QUILT ASSEMBLY

Sew rights sides together.

- Place BACKING FABRIC on a large surface wrong side up. Stretch it with masking tape against that surface.
- Place BATTING on top of backing fabric.
- Place TOP on top of the batting with right side facing up. Smooth away wrinkles using your hands.
- Pin all layers together and baste with basting thread, using long stitches. You can also use safety pins to join the layers.
- Machine or hand quilt starting at the center and working towards the corners. Remember that quilting motifs are a matter of personal preference. Have fun choosing yours!
- After you finished, trim excess of any fabric or batting, squaring the quilt to proceed to bind it.



artgalleryfabrics.com

NOTE: While all possible care has been taken to ensure the accuracy of this pattern, We are not responsible for printing errors or the way in which individual work varies. Please read instructions carefully before starting the construction of this quilt. If desired, wash and iron your fabrics before starting to cut.

TEMPLATES



1" Square

